



SIERRA SANDS

Unified School District

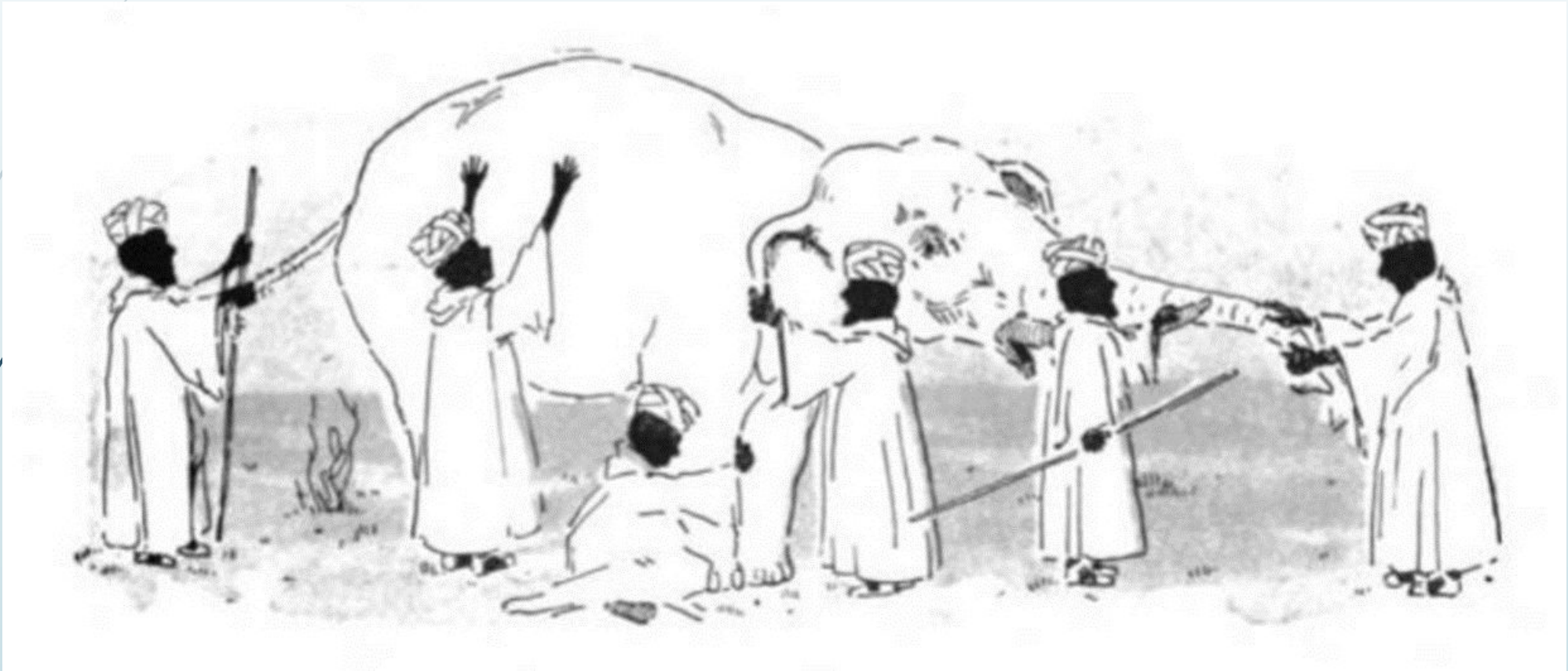
— Engaging All Learners —

SSUSD Facilities Overview

Prepared and Presented by:

Randy Coit

Director of Construction – Sierra Sands Unified School District



SSUSD History

- The first school in the Indian Wells Valley began in 1911 located between Brown and what was then Magnolia north of Inyokern.
 - That first school lasted only about a year, and then moved to a location a few miles north on Brown Road in 1913
- In 1913, four districts were set up by Kern County – Brown, Orchard, Magnolia and Las Flores.
- By 1920, these small school districts were consolidated into the Indian Wells Valley Union School District.



Indian Wells Valley School District buildings, mid-1920s. The buildings, from left, are Orchard, Las Flores, and Brown, named for their former locations.



SSUSD History

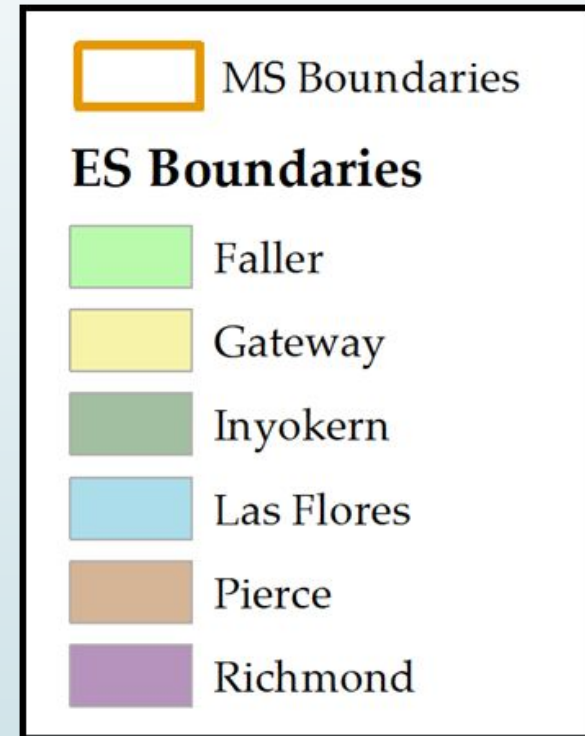
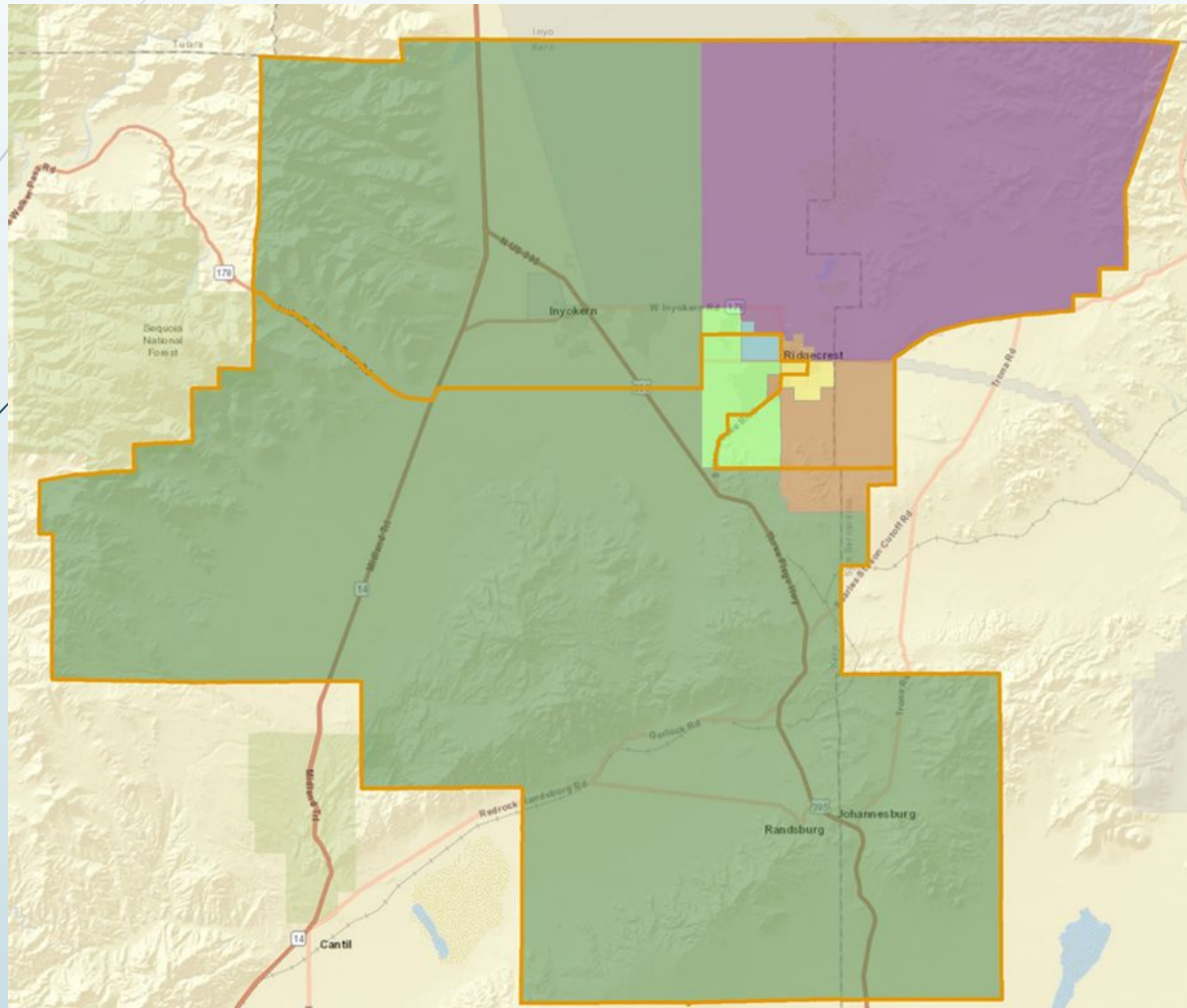
- The Navy arrived in 1943 and built additional schools.
 - Construction of the original high school campus began in 1945 on the installation.
 - The school was named in honor of Capt. Sherman E. Burroughs, the first commander of the station.
 - The school operated under the Kern County Union High School District.
 - Other elementary schools were built on the installation during the 1950's.
 - In 1960, BHS moved to its current location and Murray Middle School was opened at the old BHS campus until it was replaced in 2017 outside the perimeter.
- Additional schools were built in Ridgecrest 1950-1966.
- In 1975, all schools were consolidated into the Sierra Sands Unified School District.



District Service Area

- District serves the following communities:
 - China Lake
 - Ridgecrest
 - Inyokern
 - Johannesburg/Randsburg
- District serves both Kern and San Bernardino Counties
- District encompasses about 969 square miles

District Service Area





Facilities Condition Assessments

- In 2019 an assessment tool was used to analyze district facilities, system-by-system, to identify deficiencies. A team of engineers evaluated each school for the following categories:
 - Substructure, Shell, Interiors, Services, Equipment & Furniture, and Site Work
- The assessment tool calculated a Facilities Condition Index (FCI).
 - The FCI is a ratio (Total Estimated Cost to Repair/Total Estimated Cost to Replace) that is used in planning to determine if a facility has reached the end of its useful life.
 - An FCI of 50% or higher means it is often more cost-effective to construct a new building than to attempt to renovate an older building.

SSUSD Facility Conditions

School	Year Built	FCI
Faller ES	1966	22.30%
Gateway ES	1991	37.10%
Inyokern ES	1949	30.80%
Las Flores ES	1960	29.80%
Pierce ES	1959	45.30%
Richmond ES*	1953	69.80%
Vieweg ES	1952	81.30%
James Monroe MS	1950	95.10%
Murray MS	2017	0.30%
Burroughs HS**	1958	46.80%
Mesquite HS	1978	62.50%
Burroughs HS Stadium		
Burroughs HS Stadium	1958	236.70%
District Offices	1945	95.00%
Transportation Yard	1945	155.90%
Sierra Vista Center	2000	78.80%

*Assessment completed prior to 2019 earthquakes

** Assessment includes PAC

Projected District Enrollment

Grade	2019-20	2020-21	2021-22	2022-23	2023-24	2024-25	2025-26	2026-27	2027-28	2028-29
TK	82	82	82	82	82	82	82	82	82	82
K	344	339	344	320	334	334	334	334	334	334
1	344	347	346	347	324	338	338	338	338	338
2	401	350	353	352	353	328	344	344	344	344
3	388	388	339	342	339	342	319	333	333	333
4	390	399	402	349	351	349	351	328	343	343
5	417	396	403	407	353	354	353	354	331	348
6	367	414	389	402	399	352	352	349	352	329
7	390	365	416	387	403	401	348	352	349	352
8	379	400	373	422	396	413	404	355	357	355
9	414	415	438	409	463	431	454	437	385	390
10	443	405	407	430	401	454	425	446	431	380
11	405	427	391	393	417	387	438	411	429	417
12	366	396	417	382	385	410	380	428	401	420
Total	5130	5123	5100	5024	5000	4975	4922	4891	4809	4765

Enrollment projections reflect declining enrollment through 2029 (Cooperative Strategies). Projections do not include Universal TK implementation.



SSUSD Construction and Modernization Past 16 Years

- ❑ 2006 Measure A Bonds
- ❑ Career Technical Education (CTE) Program BHS New Engineering and Design Building
- ❑ Modernization of Burroughs High School
- ❑ Construction of new Murray Middle School
- ❑ Mesquite HVAC and Structural Upgrades
- ❑ HVAC Replacement Gateway and Lighting Upgrades All Schools
- ❑ Gateway School Flooring replacement
- ❑ July 2019 Earthquake Repairs
- ❑ BHS PAC New Roof and Stage Curtains

Inyokern Elementary School



Opened In 1913
2006 Measure A Bond Infrastructure Improvements and Modernization

Las Flores Elementary School



2006 Measure A Bond Infrastructure Improvements and Modernization,
8 New Classrooms and 1 New Restroom Building

Faller Elementary School



2006 measure A Bond Infrastructure Improvements and Modernization
6 New Classrooms and 1 New Restroom Building

Pierce Elementary School



2006 Measure A Bond Infrastructure Improvements and Modernization, New Computer Lab, and One Additional Classroom

Richmond Elementary School



Closed Due to Earthquake Damage 2019

Vieweg Elementary School



Currently the Temporary Home of Richmond Elementary School Emergency Earthquake Repairs in 2019

Gateway Elementary School



Emergency Earthquake Repairs 2019, Deferred Maintenance Flooring Replacement 2019, Prop 39 HVAC Replacement 2017

James Monroe Middle School



Emergency Earthquake Repairs 2019

Murray Middle School



New School Completed In 2017 Department of Defense (DoD)

Mesquite High School



2017 HVAC Replacement, Electrical and Structural Upgrades Facilities Fund

Burroughs High School



2006 Measure A Bond Infrastructure Upgrades,
CTE Engineering and Design Building 2010,
DoD Modernizations and New Admin Building 2016



Current Construction Projects

- Construction of new Richmond School
 - Funded by DoD Office of Local Defense Community Cooperation (OLDCC) Grant Funded
- HVAC Replacement and Control Upgrades
 - Funded with Coronavirus Aid Relief and Economic Security (CARES) Elementary and Secondary School Emergency Relief Fund (ESSER) III
- New Electric Bus Yard at the Sierra Vista Center
 - Southern California Edison (SCE) Charge Ready Transport Program
- New Preschool Playground at the Faller Preschool
 - State Preschool Funds



State and Federal Agencies

- Public school construction is heavily regulated
- Over 60 State and Federal agencies have some oversight of public school construction.
 - CDE California Department of Education
 - DGS Department of General Services
 - DSA Division of the State Architect
 - OPSC Office of Public School Construction
 - DIR Department of Industrial Relations
 - DTSC Department of Toxic Substances Control
 - OPR Governor's Office of Planning and Research is responsible for CEQA California Environmental Quality Act
- Public school construction is significantly more expensive than private construction

Division of State Architecture (DSA)

- March 10, 1933 at 5:55 p.m.
- Long Beach and surrounding areas experience a 6.3 earthquake.
- 70 schools were destroyed with hundreds of others damaged.



The Field Act

- In neighboring Glendale, Assemblyman Don Field saw first-hand the destruction left by the earthquake.
- As a former building contractor, Assemblyman Field was appalled by how destructive the earthquake had been.
- Assemblyman Field immediately returned to Sacramento to see how similar incidents could be avoided.
- Assemblyman Field quickly called a meeting with State Architect George McDougall, who brought engineer W.C. Willett with him.
- Within days, engineers in the State Architect's Office helped Assemblyman Field draft a bill that would charge the State Architect with building safe schools.





Key Provisions of Field Act

- Structural plans must be prepared by licensed structural engineers.
- Structural plans must be approved by an independent state agency (specifically, the Division of the State Architect).
- There must be continuous inspection of all work by a DSA approved project inspector who is retained by the school district.
- Project architect and engineers must perform construction observation and administration.
- The construction process is overseen by DSA.
- A Final Verified Report must be filed by the project architect, engineers, inspectors, testing labs, and the contractor.



Field Act vs. Other Buildings

- The Field Act has stricter structural code requirements.
- Structural design work must be completed by structural engineers rather than civil engineers.
- Structural plan review is completed by structural engineers rather than civil engineers.
- Schools have continuous on-site inspection; typically, other buildings have only periodic inspection.

Field Act Performance Requirements

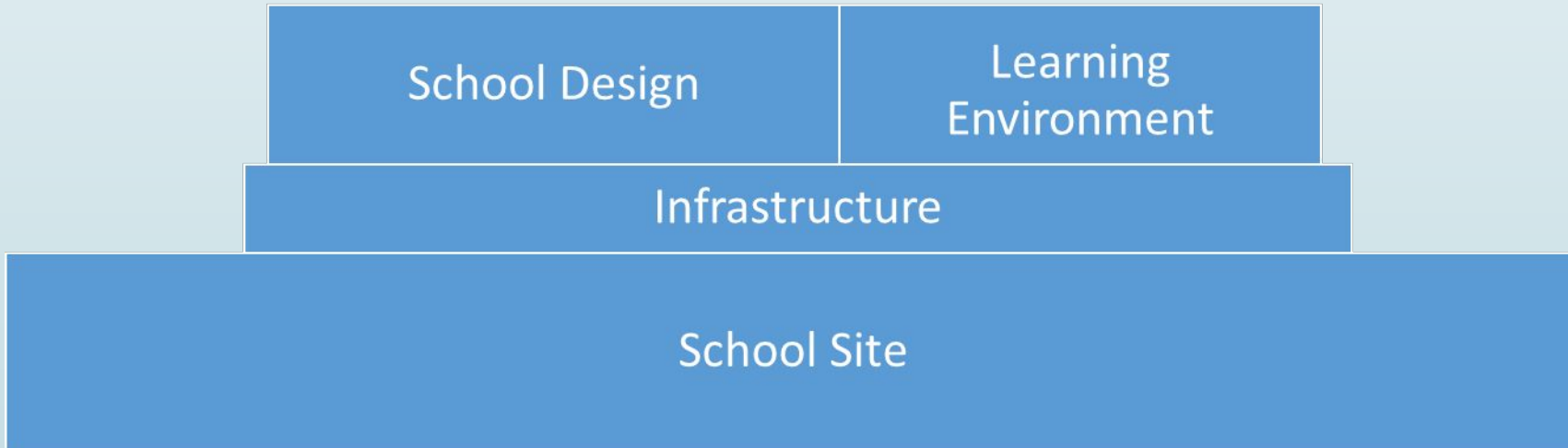
Performance Level appropriate for State Essential Services Buildings



Performance Level appropriate for Schools



Modernization / Construction Budget



Learning Environment

- Flexible Classrooms



- Lunch Shelters



- Replacing Portable / Temporary Classrooms



- Science Centers



Learning Environment

- Gyms, Pools, and Top Notch Athletic Facilities



- Performing Arts Centers



Basic Infrastructure

- Heating Ventilation & Air Conditioning



- Fire/Life Safety



- Plumbing/ Restrooms



- “Cool Safe Warm & Dry”
Basic Infrastructure

- Roofs



- Seismic Safety



- ADA Safety Compliance



- Asbestos Removal

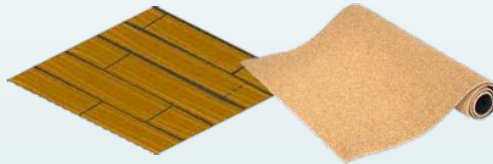


Repairs and Upgrades

- Painting



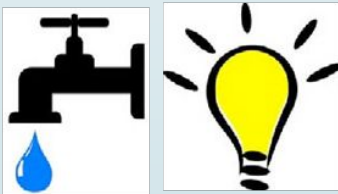
- Flooring



- Parking and Traffic Circulation



- Water and Energy Conservation

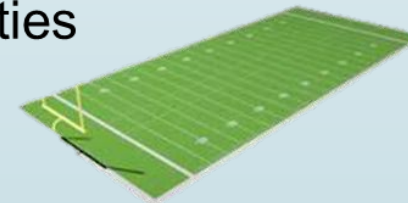


- Repairs and Upgrades



- Technology Infrastructure

- Fields and Athletic Facilities



Current Facility Needs

School	Year Built	FCI
Faller ES	1966	22.30%
Gateway ES	1991	37.10%
Inyokern ES	1949	30.80%
Las Flores ES	1960	29.80%
Pierce ES	1959	45.30%
Richmond ES*	1953	69.80%
Vieweg ES	1952	81.30%
James Monroe MS	1950	95.10%
Murray MS	2017	0.30%
Burroughs HS**	1958	46.80%
Mesquite HS	1978	62.50%
Burroughs HS Stadium	1958	236.70%
District Offices	1945	95.00%
Transportation Yard	1945	155.90%
Sierra Vista Center	2000	78.80%



Current Facility Needs

- James Monroe MS, Vieweg ES, and Mesquite HS are in need of replacement and/or renovation
 - All received some earthquake repair in 2019
 - No funding is available for replacement/modernization at this time
- Football stadium
- District offices
- Transportation Yard/M&O/Warehouse
- Possible Solar Investment



Upcoming Meetings

- District Budget and Facilities Funding
- Public Opinion Research

- Join your discussion group:
 - Discussion group topic is listed on name tag
 - Room number is also listed on name tag
 - Please consider the following questions



Questions to Consider

- How should priorities be determined?
 - Basic infrastructure
 - Repairs and upgrades
 - Learning environment
 - Preparing for the future
 - Other



Discussion Groups

- Discussion group topics:
 - Accountability and Finance
 - Safety and Security
 - Technology/College & Career Readiness
 - Facilities and Outdoor Areas
 - Student learning
 - Energy Costs/Savings
- You'll have 1 hour to discuss the questions in the group.
 - Afterwards you'll be asked to report back to the Committee:
 - What we discussed and agreed upon
 - What we are most concerned about
 - What questions do we have that we'd like to learn more about